

For more information:

If you need more advice about any aspect of FAP, you are welcome to contact:

Clinical Genetics Department

Northern Scotland (main base Aberdeen)

Tel: 01224 552120 Fax: 01224 559390

(Aberdeenshire, Moray, Highland, Western & Northern Isles)

Tayside (main base Dundee)

Tel: 01382 632035 Fax: 01382 645731

(Perth & Kinross, Angus, North East Fife)

South East Scotland (main base Edinburgh)

Tel: 0131 651 1012 Fax: 0131 651 1013

(Borders, Lothian, South West Fife)

West of Scotland (main base Glasgow)

Tel: 0141 201 0808 Fax: 0141 201 0361

(Glasgow, Argyll & Bute, Ayrshire, Dumfries & Galloway, Stirling, Lanarkshire, Falkirk)

If you need more advice about cancer and support groups, please contact:

Maggies Centres

www.maggiescentres.org

Maggies Highlands Tel: 01463 706302

Maggies Dundee Tel: 01382 496384

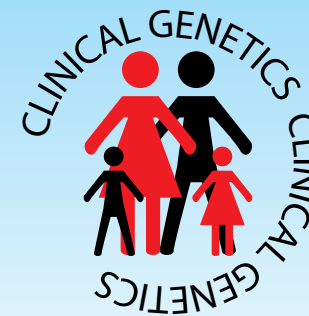
Maggies Edinburgh Tel: 0131 5373131

Maggies Glasgow Tel: 0141 330 3311

Seen in clinic by.....

Written by Pam Chapman, Northern Genetics Service & Guys Clinical Genetics. Updated by Genetic Interest Group Scotland. Last updated Feb 2004.

Familial Adenomatous Polyposis (FAP)



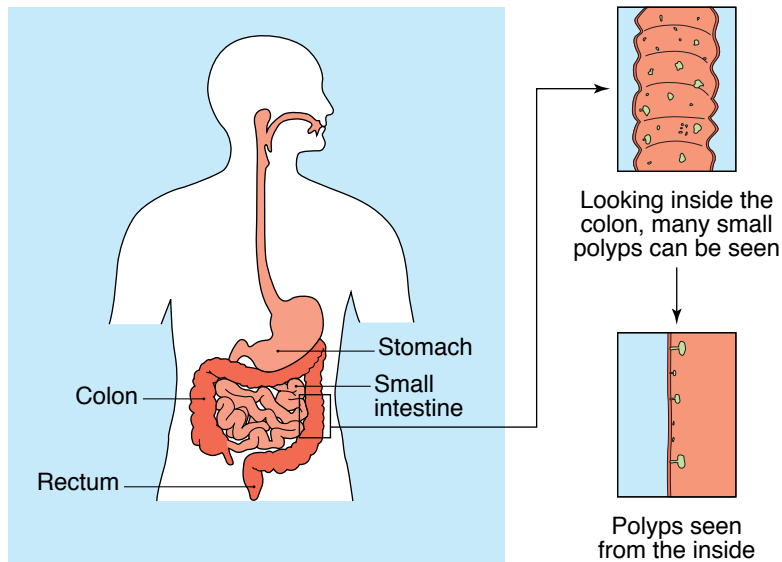
Information booklet
for young people

What is Familial Adenomatous Polyposis (FAP)?

FAP is a condition which runs in families. It causes lots of little lumps called polyps to grow inside the bowel. These polyps do not do any harm unless they are left inside the bowel for a long time (many years) when one might become a cancer.

What is a polyp?

It is a little mushroom-like growth inside the bowel wall. You can look at the picture on the following page to see where the polyps grow.



The large bowel (colon and rectum) showing polyps in the colon

How does FAP run in families?

FAP is caused by a change in a gene. Genes are messages which control the working of the body and decide things like the colour of our eyes. Think of genes as recipes. The recipes allow the body to make chemical tools and building blocks. If part of the recipe is missing or has not been copied correctly, that part of the body will not be able to do its job properly.

Explanation of unfamiliar words

- FAMILIAL** Something which runs in families.
- POLYP** A non-cancerous lump on the bowel wall.
- ADENOMA** (Adenomatous) There are different kinds of polyp: this describes how the polyps in FAP look under the microscope.
- LARGE BOWEL** The end section of the intestine or food pipe made up of colon and rectum.
- GENE** One of the chemical recipes which control the working of the body.
- DOMINANT** Only one of a pair of genes is faulty.
- CHRPE** (Congenital hypertrophy of retinal pigment epithelium). Harmless black marks on the back of the eye.
- SIGMOIDOSCOPY** A short tube with a light at the end is passed into the rectum and the last part of the colon to look for polyps.
- COLONOSCOPY** Like sigmoidoscopy, but the whole colon is seen.
- APC** The name scientists give the FAP gene. It stands for adenomatous polyposis coli.
- COLECTOMY** An operation to remove the colon, leaving the rectum in place.
- ILEO-RECTAL ANASTAMOSIS** (IRA) The small bowel is attached to the rectum when the colon has been removed.
- POUCH** A similar operation to IRA but the lining of the rectum is also removed and is replaced by lining from the small bowel.
- PAN-PROCTO COLECTOMY** (PPC) The colon and rectum are removed and the small bowel is brought to the surface of the abdomen.
- ILEOSTOMY** When someone has a PPC operation, the waste material is collected in a disposable bag.

Who should I contact for further advice?

The first person you should ask if you have any health problems is your family doctor. It may be that he/she is not very familiar with this problem, so you should take along this fact sheet. If anyone in your family has FAP, then they will have a surgeon, and you could ask them for advice. Every region in the UK has a genetics service and they can be contacted for help via your GP or directly for advice.

Is there a cure?

The gene for FAP has now been found and researchers will soon work out what job it does in the bowel. This may help us to develop different means of treatment. There is no way at present of correcting or replacing the faulty gene, but scientists are working on ways to put a correct copy of the FAP gene into the bowel wall which is called "gene therapy".

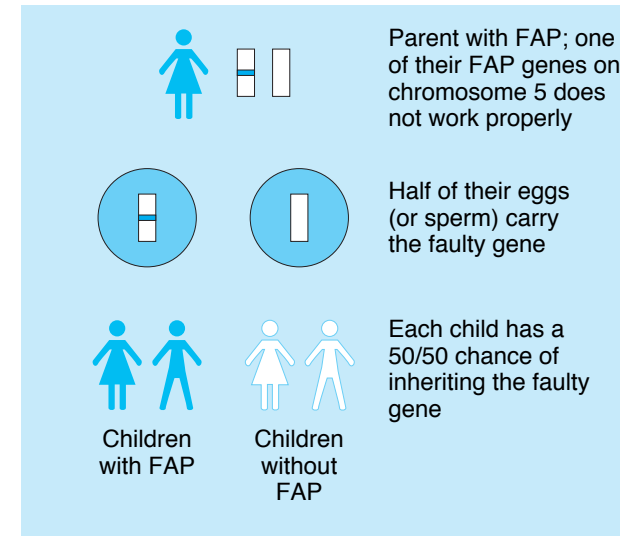
Doctors are also looking at non-surgical ways to stop polyps growing, such as drug treatment, and these may be recommended in certain circumstances.

These options may offer an opportunity to treat polyposis without surgery in the future but the only safe option at the moment is an operation.

Most genes come in matching pairs, with a copy of each gene coming from the mother's egg and a copy from the father's sperm.

It only takes one copy of a faulty gene to cause FAP.

If someone has FAP it means that they have a working copy and a faulty copy of the gene. Each time they have a child, it is a fifty-fifty chance whether or not they pass on the working copy or the faulty one.



How FAP is passed from one generation to the next

How do we know who has FAP?

Most people who have the gene for FAP begin to develop polyps in their early teens, so bowel checks should start between 10 and 14 years of age.

Most people get their polyps by the age of 30, and with every passing year without polyps, the chances that they actually have FAP go down.

The FAP gene has other effects on the body as well as causing polyps to appear. Some people get skin cysts, and some get harmless bumps on their bones.

For some reason, which we don't understand, most people get small black dots at the back of the eye which we call CHRPEs (this stands for congenital hypertrophy of the retinal pigment epithelium, but no-one ever calls them that!). These do not affect vision in any way.

An eye doctor can look at the back of your eyes with a bright light to see if there are any CHRPEs. A lot of people who do not have FAP have one or two of these black dots, but if there are more than five, or a large distinctive area, then this is a good indication that you have the FAP gene.

If CHRPEs do not run in your family with polyps, then a clear eye examination does not mean that you do not carry the gene.

There are different ways we can decide who has FAP; look for polyps, look for CHRPEs, do gene tests, or look for bony lumps or cysts.

The only way we can be sure that anyone has FAP is if we find a lot of polyps, or if we can prove that the faulty copy of the gene has been inherited.

Gene tests

If we think of a gene as a long word carrying a message, then the FAP gene has nearly 9000 letters in it. In different families it is a different letter or group of letters which have been wrongly copied which causes the gene not to work. The genetics team will try to work this out for each family, and if we find the "spelling" mistake we will offer a test to the rest of the family to find out who has it and who has not.

Blood cells contain copies of all your genes, so we can test the FAP gene from a blood sample.

Those who do not have the faulty copy of the gene can stop bowel screening, and they cannot pass FAP to their children. Those who do have the faulty copy will continue with regular screening as before, until polyps are found.

For some families we cannot offer a gene test. This may be because we have not yet found the fault in the gene in that family, or it may be that no one is available who has FAP to test.

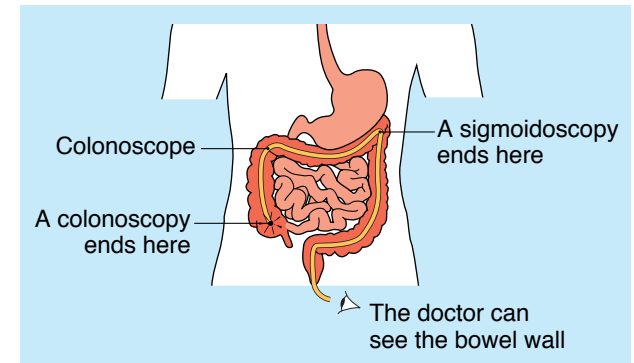
If no gene test can be done, you will be advised to carry on with regular bowel checks.

Looking for polyps

A short tube can be passed through the back passage into the lower part of the bowel. This examination is called a **sigmoidoscopy**, and you will be able to go home from hospital on the same day.

A longer, flexible tube can be used to examine more of the bowel, and this is called a **colonoscopy** (shown in the following picture).

How the bowel is examined by colonoscopy and sigmoidoscopy



Doctors may use either method, but for colonoscopy, it is necessary to prepare the bowel by emptying it before the test. The hospital will give you details about this, but it usually involves taking a liquid medicine the day before the check, and sticking to a low bulk diet for a few days to ensure that the bowel is quite empty.

What happens if polyps are found?

Usually the doctor (a surgeon) will take a sample of the lining of the bowel, or from a polyp, to be examined under the microscope. If these are harmless, it is sometimes reasonable to carry on with regular checks. However, most doctors offer the choice of having an operation if they find large number of polyps.

Many people choose to have an operation as soon as polyps are found, rather than wait until there are large polyps.

The three main operations to remove the colon are:-

An **Ileo-rectal anastomosis (IRA)** involves removing the large bowel and attaching the small bowel to the rectum. This allows you to go to the toilet normally, but sometimes this can be many times a day. The rectum, which remains intact, may develop polyps so this must be examined at least once a year to prevent a cancer starting there.

A **pouch** operation involves the removal of the lining of the rectum when the colon is removed. A pouch is then made from the end of the small bowel, which then takes over some of the work of the colon. No checks have to be made on the rectum as there is no lining to grow polyps.

A **pan-procto colectomy** is done when the rectum has to be removed. The end of the small bowel is brought to the surface and the waste material is collected in a disposable bag.